

(Initialization of the password) how to initialize the LAN interface card

You can initialize the LAN interface card and return to the factory.
This article explains how to do that.

[Procedure]

① Please log in to the LAN interface card by serial.

If you are connected by serial, please set as follows.

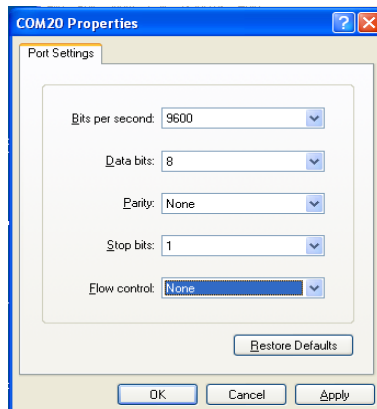
Bits per second: 9600bps

Data bits: 8 bits

Parity: none

Stop bits: 1

Flow Control: None



② After that, [Main Menu] is displayed. Please enter the "magic" in the "UPS Agent>".
Command, "OK" will be displayed.

If the "Hit Enter Key!!" Appears, please press the Enter key.

③ Again, [Main Menu] is displayed. Please enter the "22" at the "UPS Agent>".

④ [Initialize Menu] appears. , "1" where you enter the (Account Information) of "UPS Agent">
Please.

"1" is displayed, so make sure the account running the initialization

⑤ Please enter the "Yes".

Command, "OK" will be displayed

If the "Hit Enter Key!!" Appears, please press the Enter key.

⑥ Again, [Initialize Menu] appears.

Select the "Exit" on each menu, please exit the terminal capabilities.